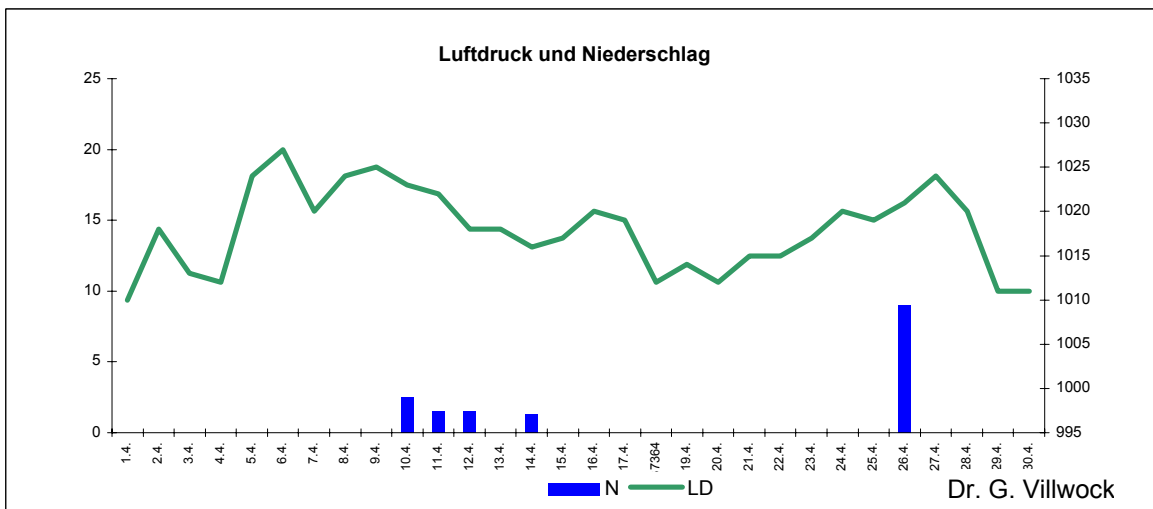
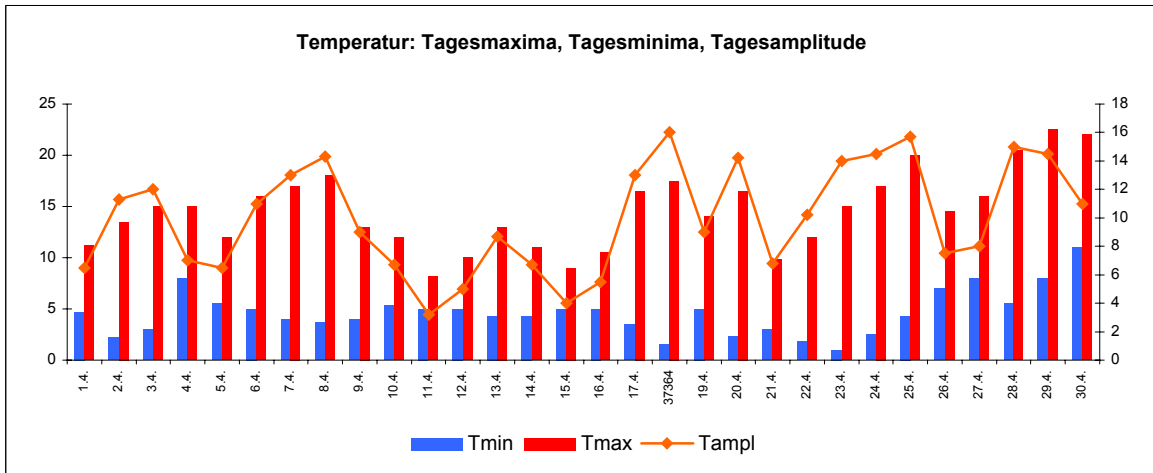
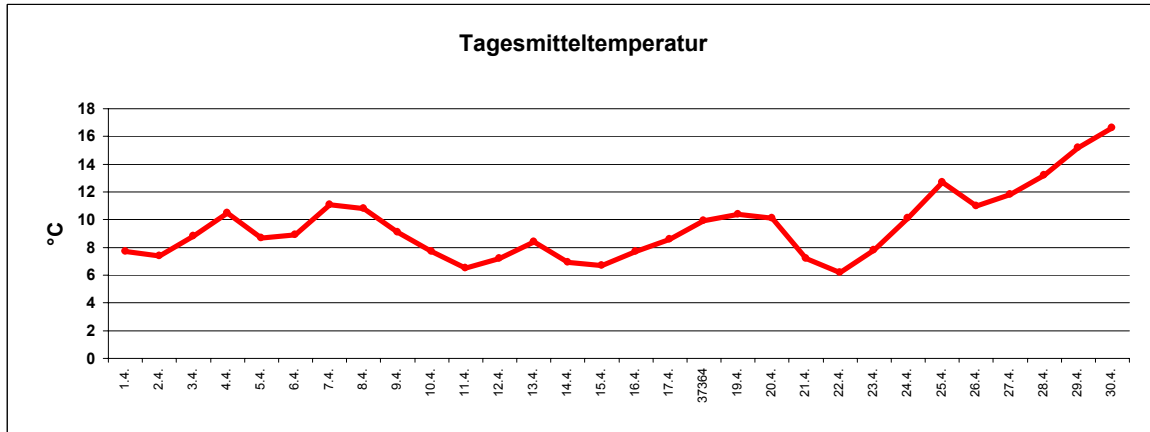


Wetter April 2010



Station Fienstedt 1
51°32' N 11°46' E Höhe: 138 m NN

	Temperatur	Temp. minim.	Temp. max.	Temp. Amplit.	Niederschlag	Luftdruck	Luftfeuchte	Bewölkung
Monatsmittel	9,5°C	4,6°C	14,6°C	10,0 grd	15,8 mm	1018 hPa	68 %	51 %
Reihe 1999/2009	8,8°C	4,2°C	13,6°C	9,4 grd	32,1 mm	1010 hPa	70%	53%
Frosttage (Tmin<0°):	0		Eistage (Tmax<0°):		0			
Sommertage (Tmax>25°C):	0		Heiße Tage (Tmax>30°C)		0			
Wärmster Tag:	16,6°C	30.4.	Kältester Tag:		6,2°C	22.4.		
Höchste Temp.:	22,5°C	29.4.	Niedrigste Temp.:		1,0°C	23.4.		



Dr. G. Villwock