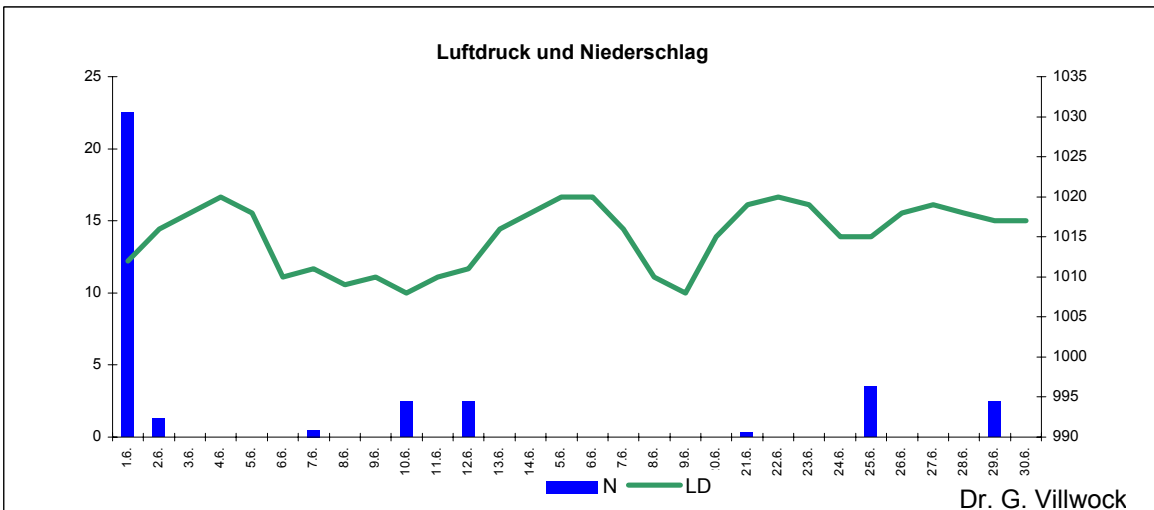
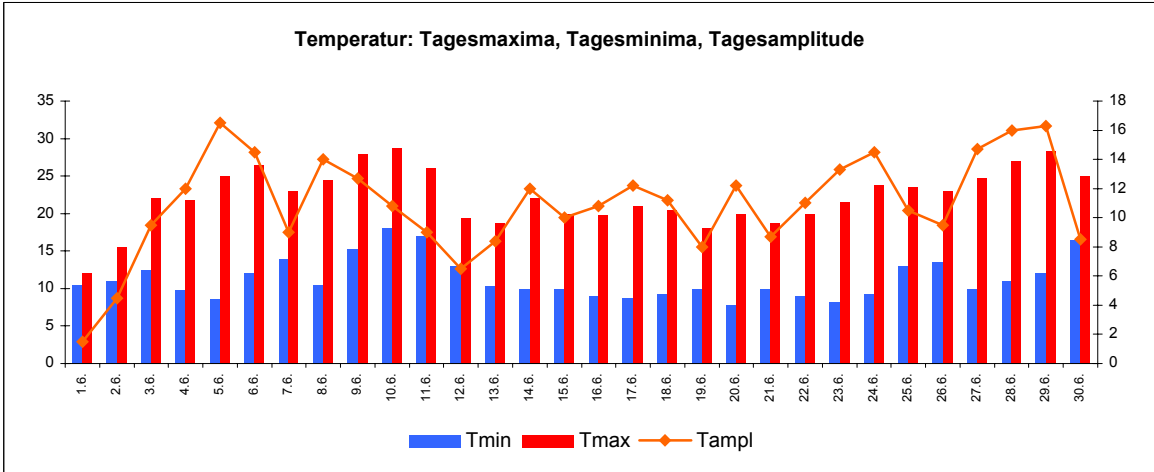
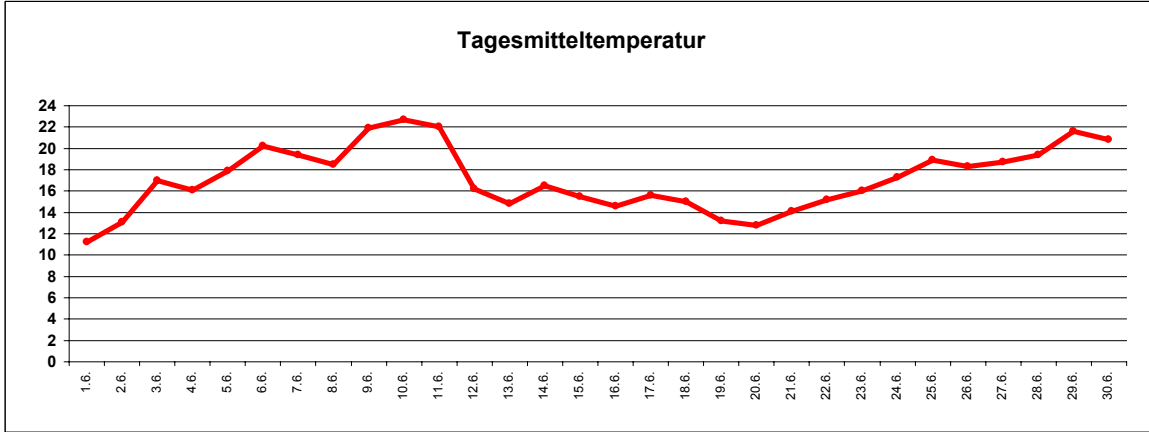


WetterJuni 2010



Station Fienstedt 1
51°32' N 11°46' E Höhe: 138 m NN

	Temperatur	Temp. minim.	Temp. max.	Temp. Amplit.	Niederschlag	Luftdruck	Luftfeuchte	Bewölkung
Monatsmittel	17,2°C	11,3°C	22,3°C	10,9 grad	35,6 mm	1015 hPa	66 %	36 %
Reihe 1999/2009	16,8°C	11,3°C	22,3°C	10,9 grad	52,9 mm	1014 hPa	69%	55%
Frosttage (Tmin<0°):	0		Eistage (Tmax<0°):		0			
Sommertage (Tmax>25°C):	8		Heiße Tage (Tmax>30°C)		0			
Wärmster Tag:	22,7°C	10.6.	Kältester Tag:		11,2°C	1.6.		
Höchste Temp.:	28,8°C	10.6.	Niedrigste Temp.:		7,8°C	20.6.		



Dr. G. Villwock