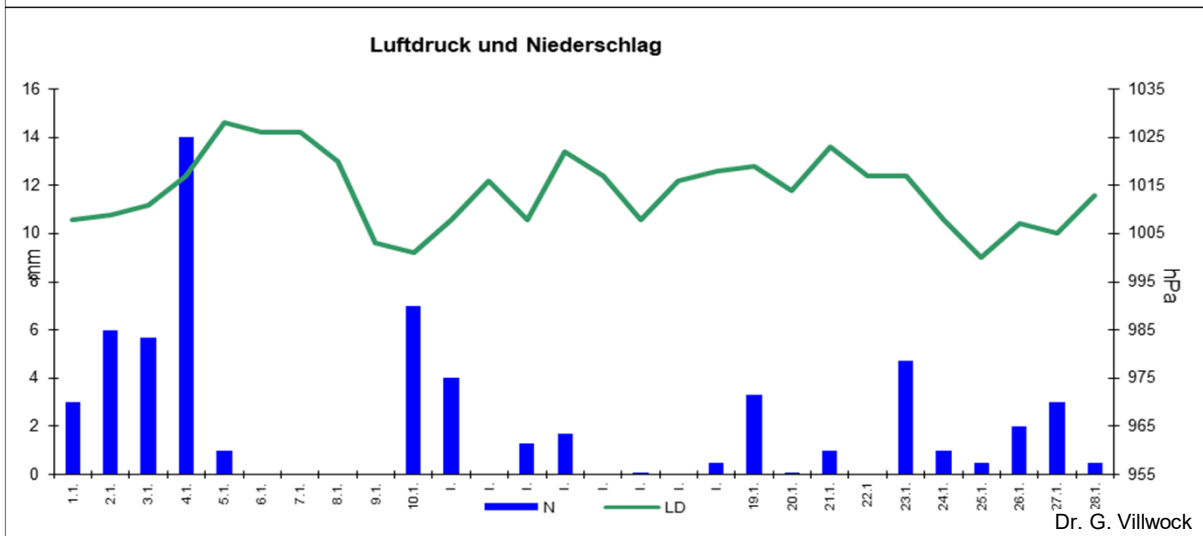
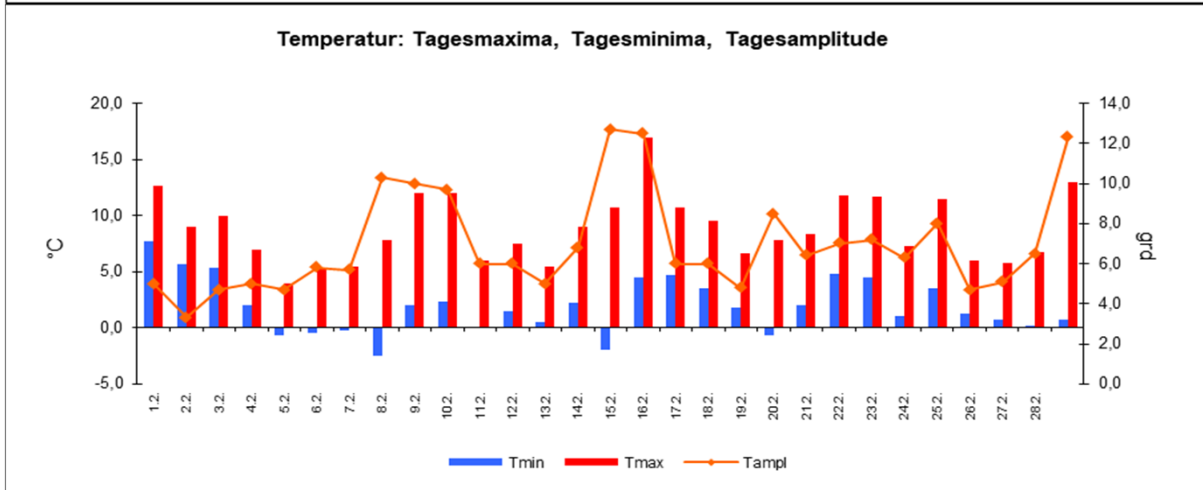
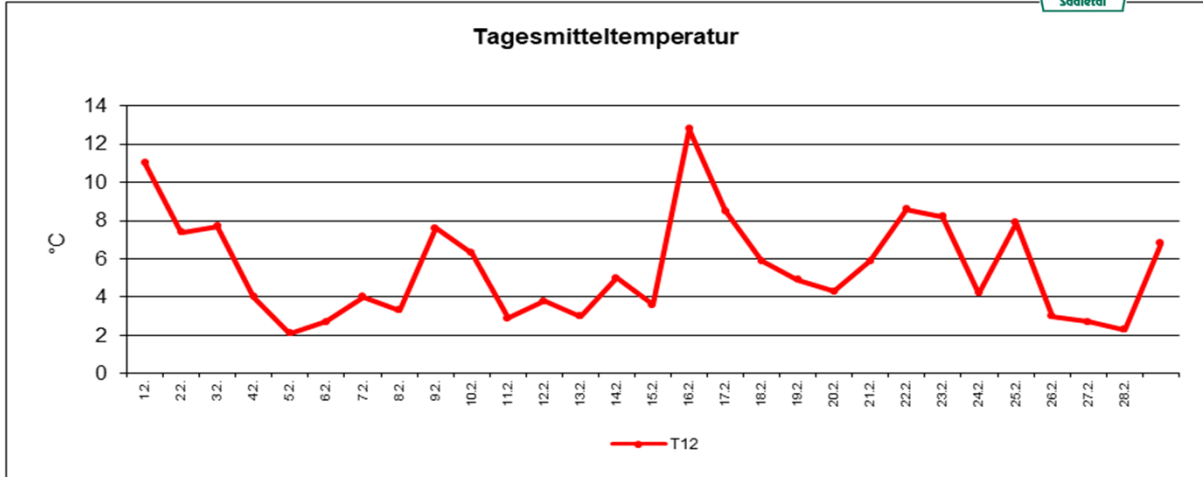


Wetter Februar 2020



Station Fienstedt 1
51°32' N 11°46' E Höhe: 138 m NN

	Temperatur	Temp. minim.	Temp. max.	Temp. Amplit.	Niederschlag	Luftdruck	Luftfeuchte	Bewölkung
Monatsmittel	5,5°C	1,9°C	8,9°C	7,0 grd	65,4 mm	1013 hPa	67 %	79 %
Reihe 1999/2019	1,3°C	-1,3°C	4,1°C	5,4 grd	26,8 mm		81%	65%
Frosttage (Tmin<0°):	6		Eistage (Tmax<0°):	0				
Sommertage (Tmax>25°C):	0		Kalte Tage (Tmax<-10°C)	0				
Wärmster Tag:	12,8°C	16.2.	Kältester Tag:	2,1°C	5.2.			
Höchste Temp.:	17,0°C	16.2.	Niedrigste Temp.:	-2,5°C	8.2.			



Dr. G. Villwock