

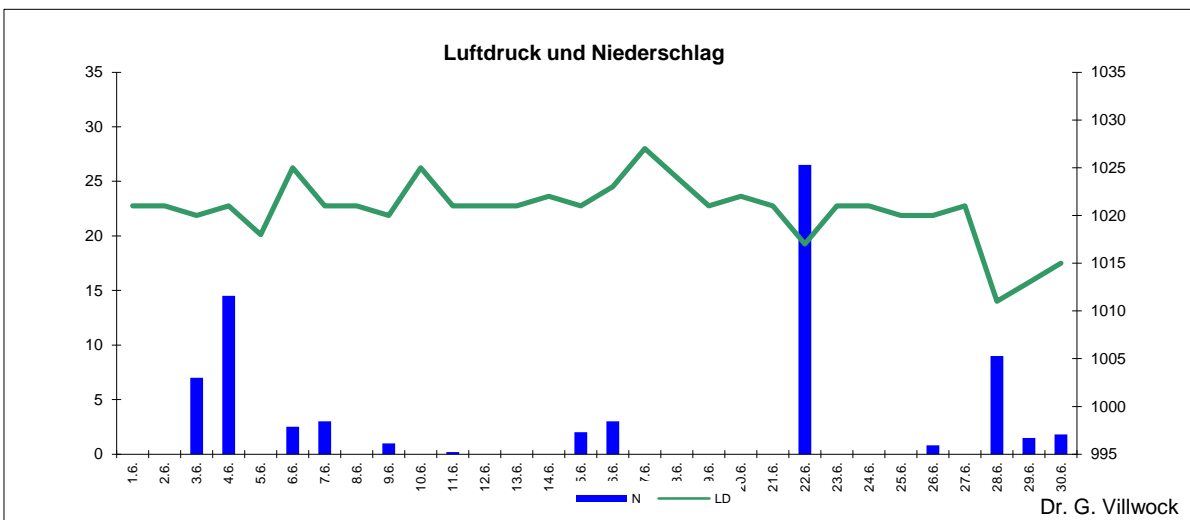
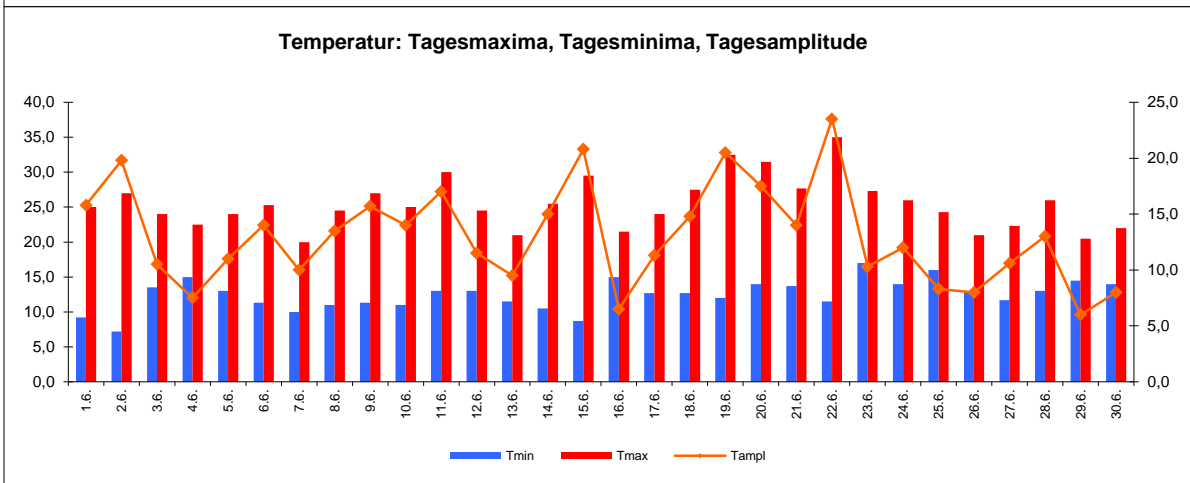
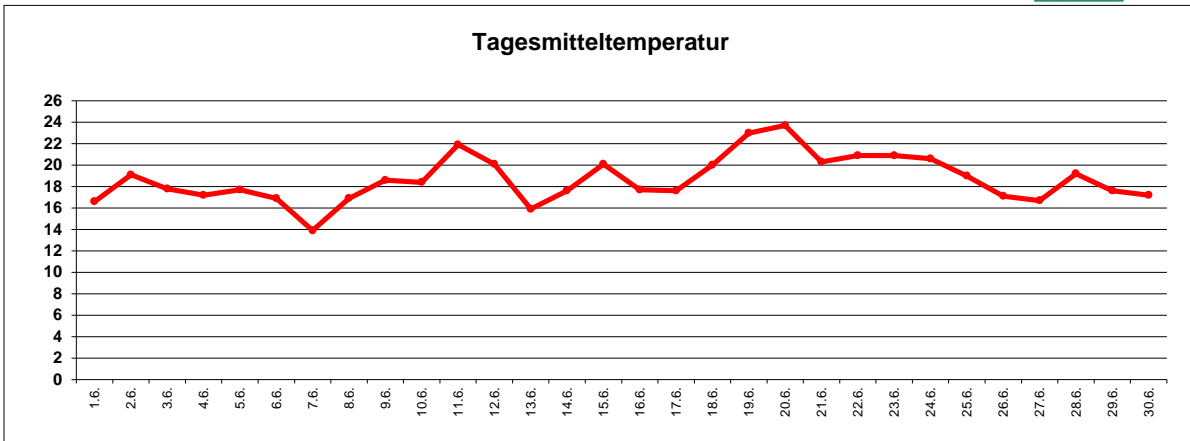
Wetter Juni 2017



Station Fienstedt 1

51°32' N 11°46' E Höhe: 138 m

	Temperatur	Temp. minim.	Temp. max.	Temp. Amplit.	Niederschlag	Luftdruck	Luftfeuchte	Bewölkung
Monatsmittel	18,7°C	12,5°C	25,5°C	13,0 grd	72,8 mm	1021 hPa	65 %	52 %
Reihe 1999/2016	16,9°C	11,5°C	22,2°C	10,7 grd	56,1 mm		68%	53%
Frosttage (Tmin<0°):		0		Eistage (Tmax<0°):		0		
Sommertage (Tmax>25°C):		12		Heiße Tage (Tmax>30°C)		4		
Wärmster Tag:		23,7°C	20.6.	Kältester Tag:		13,9°C	7.6.	
Höchste Temp.:		35,0°C	22.6.	Niedrigste Temp.:		7,2°C	2.6.	



Dr. G. Villwock