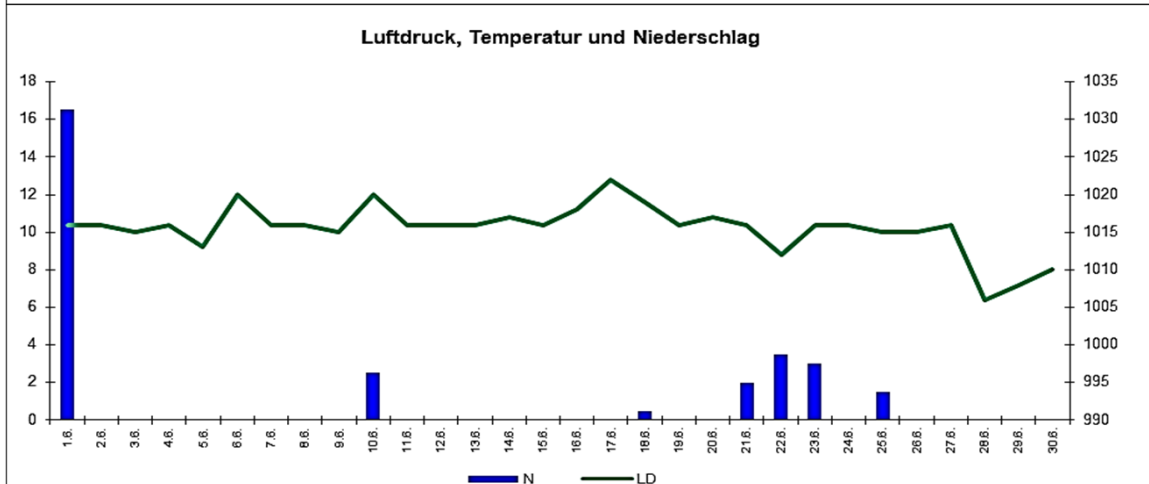
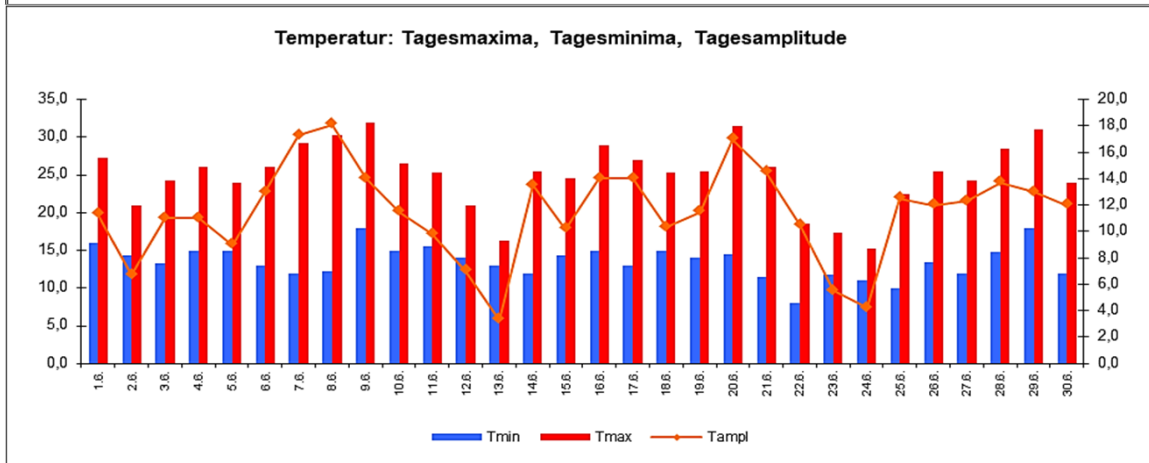
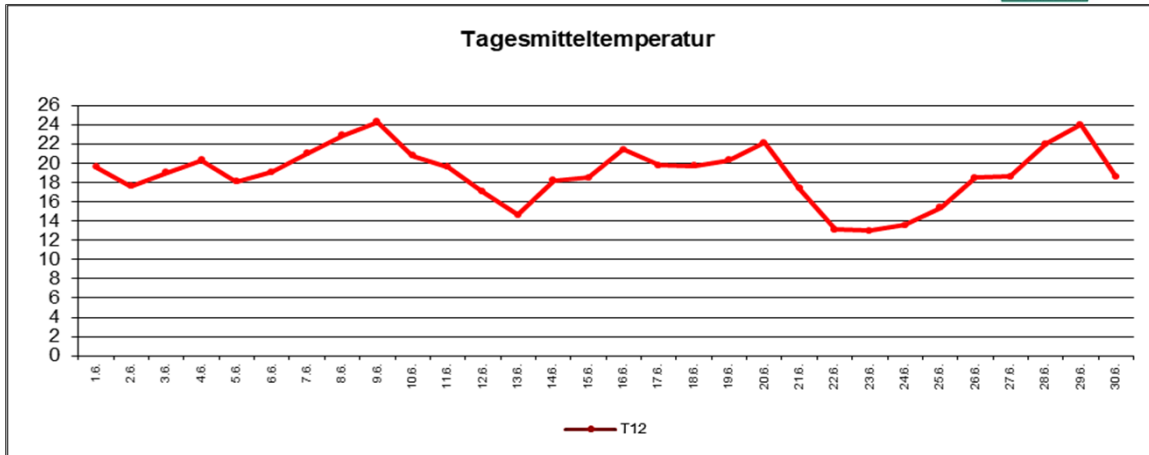


Wetter Juni 2018



Station Fienstedt 1
51°32' N 11°46' E Höhe: 138 m NN

	Temperatur	Temp. minim.	Temp. max.	Temp. Amplit.	Niederschlag	Luftdruck	Luftfeuchte	Bewölkung
Monatsmittel	18,9°C	13,6°C	25,0°C	11,5 grad	29,5 mm	1016 hPa	62 %	53 %
Reihe 1999/2017	17,0°C	11,6°C	22,4°C	10,9 grad	55,1 mm		68%	53%
Frosttage (Tmin<0°):		0		Eistage (Tmax<0°):		0		
Sommertage (Tmax>25°C):		14		Heiße Tage (Tmax>30°C)		4		
Wärmster Tag:		24,3°C	9.6.	Kältester Tag:		13,0°C	23.6.	
Höchste Temp.:		32,0°C	9.6.	Niedrigste Temp.:		8,0°C	22.6.	



Dr. G. Villwock