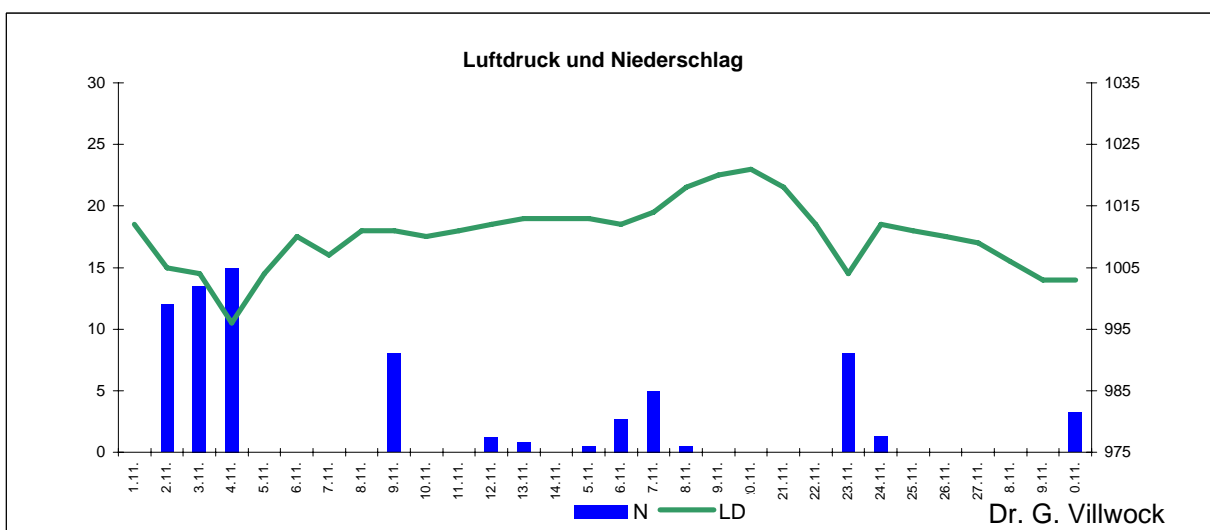
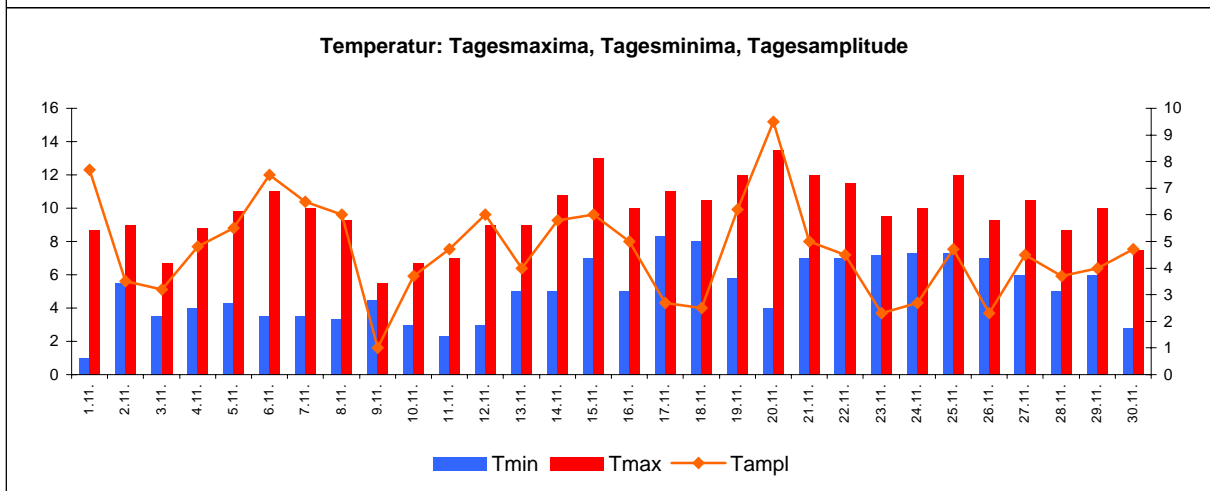
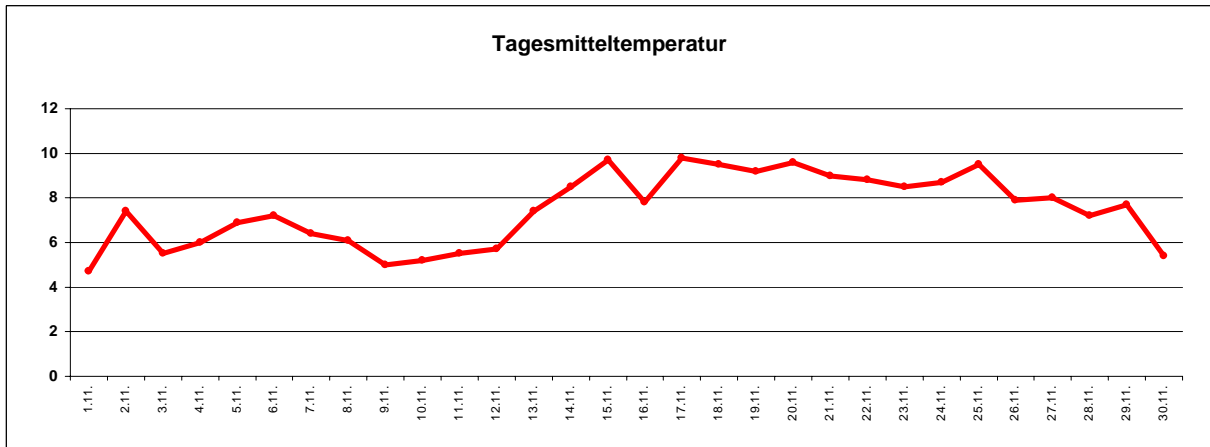


Wetter November 2009



Station Fienstedt 1
51°32' N 11°46' E Höhe: 138 m NN

	Temperatur	Temp. minim.	Temp. max.	Temp. Amplit.	Niederschlag	Luft-druck	Luft-feuchte	Bewöl-kung
Monatsmittel	7,5°C	5,1°C	9,7°C	4,7 grad	71,7 mm	1010 hPa	83 %	77 %
Reihe 1999/2008	4,8°C	2,4°C	7,1°C	4,7 grad	46,3 mm	1011 hPa	89%	70 %
Frosttage (Tmin<0°):	0		Eistage (Tmax<0°):	0				
Sommertage (Tmax>25°C):	0		Heiße Tage (Tmax>30°C):	0				
Wärmster Tag:	9,8°C	17.11	Kältester Tag:	4,7°C	1.11.			
Höchste Temp.:	13,5°C	20.11	Niedrigste Temp.:	1,0°C	1.11.			



Dr. G. Villwock