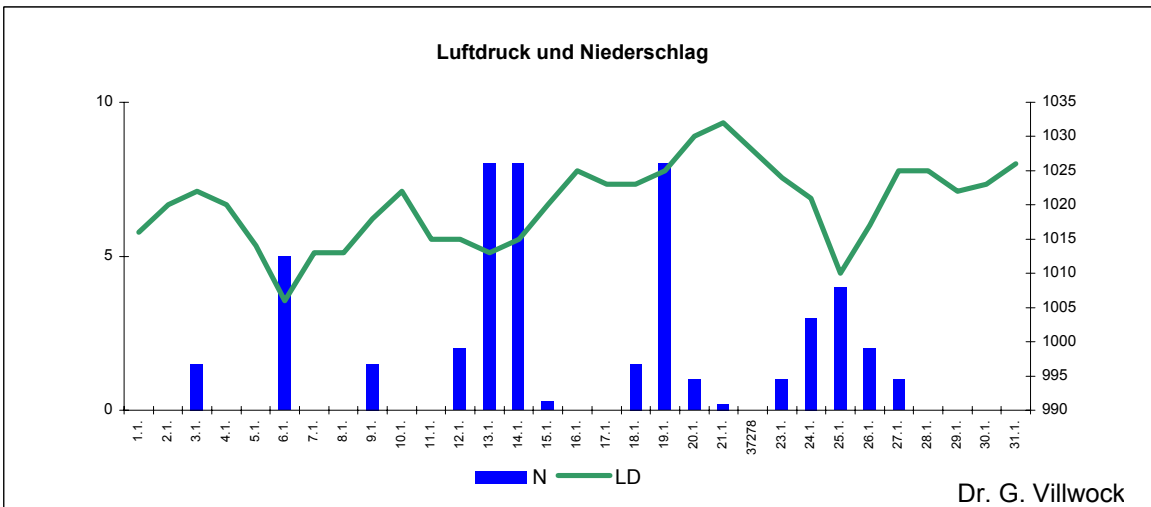
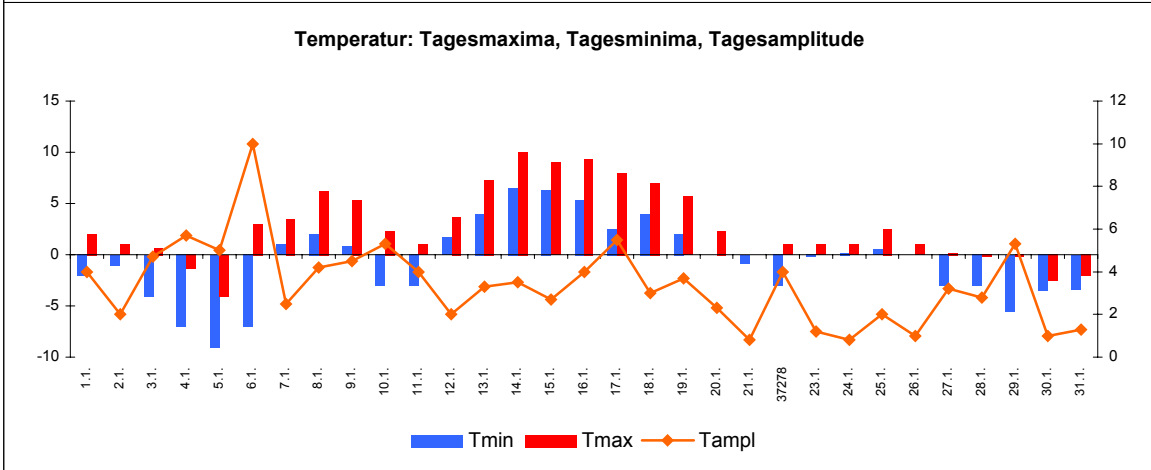
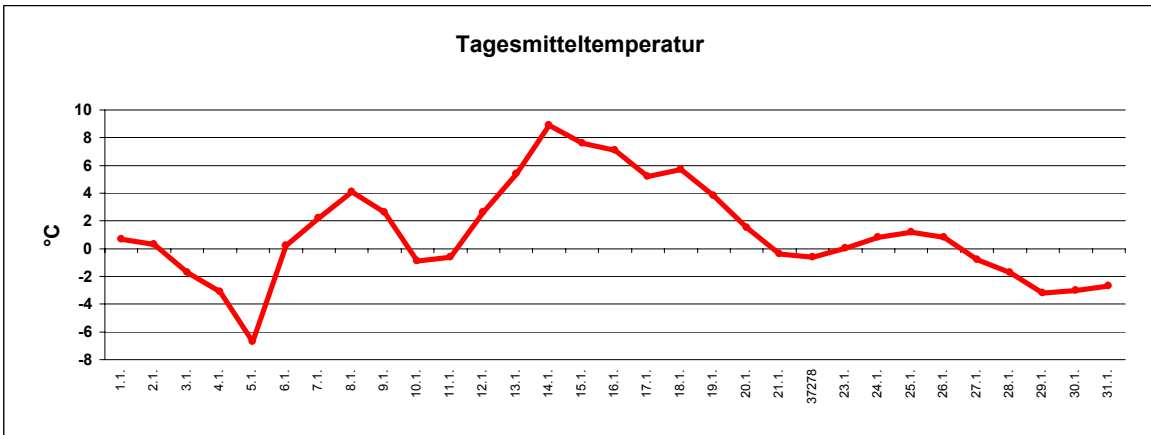


Wetter Januar 2011



Station Fienstedt 1
51°32' N 11°46' E Höhe: 138 m NN

	Temperatur	Temp. minim.	Temp. max.	Temp. Amplit.	Niederschlag	Luftdruck	Luftfeuchte	Bewölkung
Monatsmittel	1,1°C	-0,7°C	2,7°C	3,4 grad	48,0 mm	1020 hPa	88 %	71 %
Reihe 1999/2010	0,2°C	-2,1°C	2,4°C	4,5 grad	35,7 mm	1012 hPa	87%	69%
Frosttage (Tmin<0°):	10		Eistage (Tmax<0°):		6			
Sommertage (Tmax>25°C):	0		Heiße Tage (Tmax>30°C)		0			
Wärmster Tag:	8,9°C	14.1.	Kältester Tag:		-6,7°C 5.1.			
Höchste Temp.:	10,0°C	14.1.	Niedrigste Temp.:		-9,0°C 5.1.			



Dr. G. Villwock