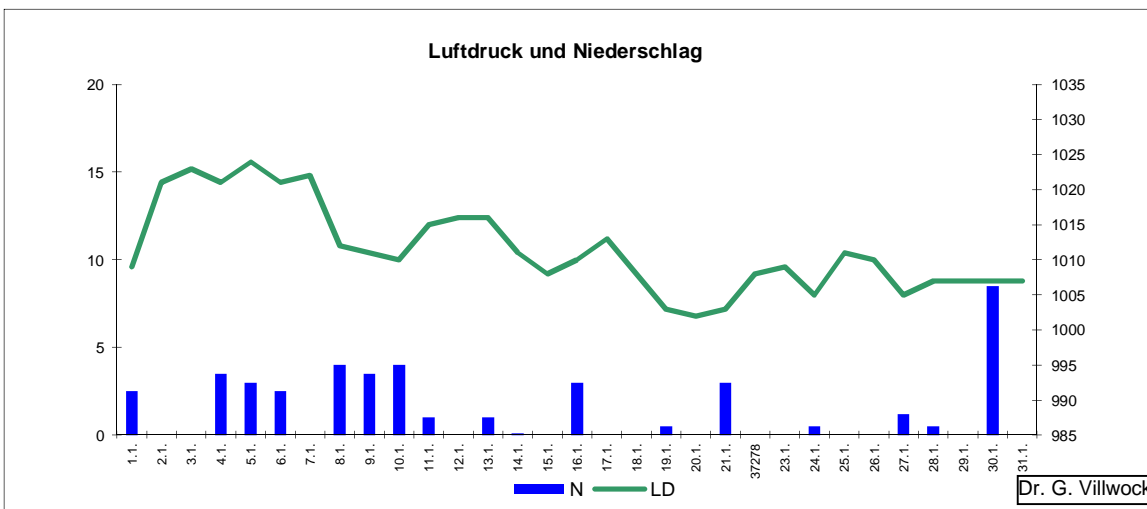
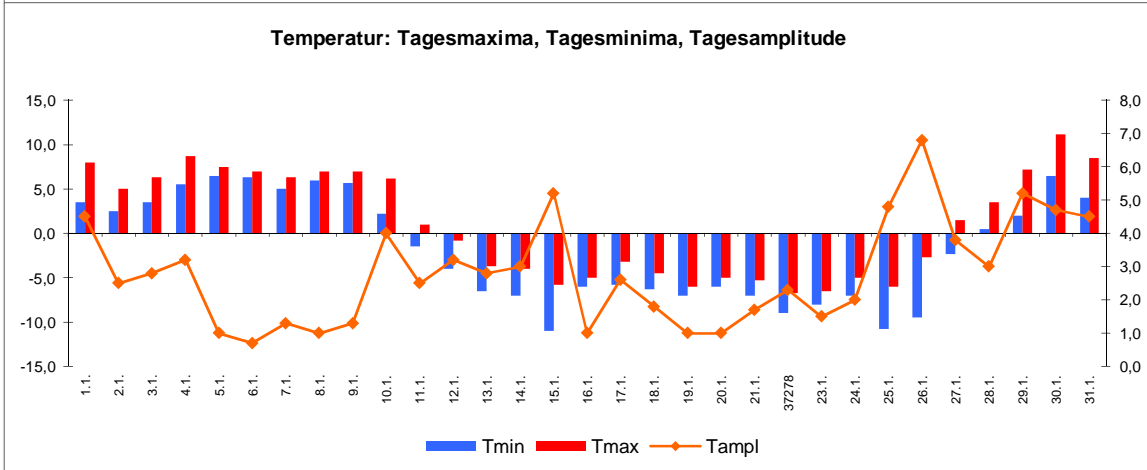
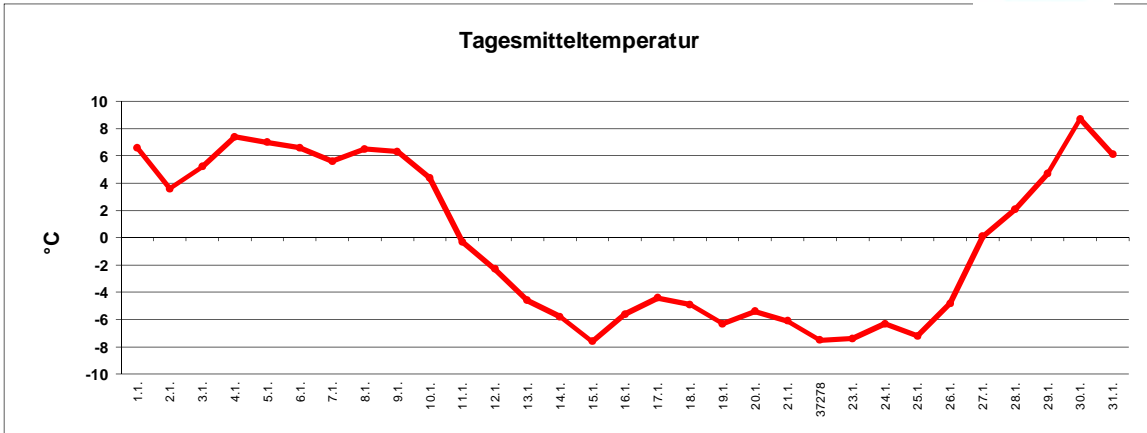


# Wetter Januar 2013



Station Fienstedt 1  
51°32' N 11°46' E Höhe: 138 m NN

	Temperatur	Temp. minim.	Temp. max.	Temp. Amplit.	Niederschlag	Luft-druck	Luft-feuchte	Bewölkung
Monatsmittel	-0,2°C	-1,8°C	1,0°C	2,8 grd	42,3 mm	1011 hPa	81 %	83 %
Reihe 1999/2012	0,4°C	-1,9°C	2,5°C	4,3 grd	38,4 mm	1013 hPa	87%	69%
Frosttage (Tmin<0°):	2		Eistage (Tmax<0°):		15			
Sommertage (Tmax>25°C):	0		Heiße Tage (Tmax>30°C)		0			
Wärmster Tag:	8,7°C	30.1.	Kältester Tag:		-7,6°C	15.1.		
Höchste Temp.:	11,2°C	30.1.	Niedrigste Temp.:		-11,0°C	15.1.		



Dr. G. Villwock