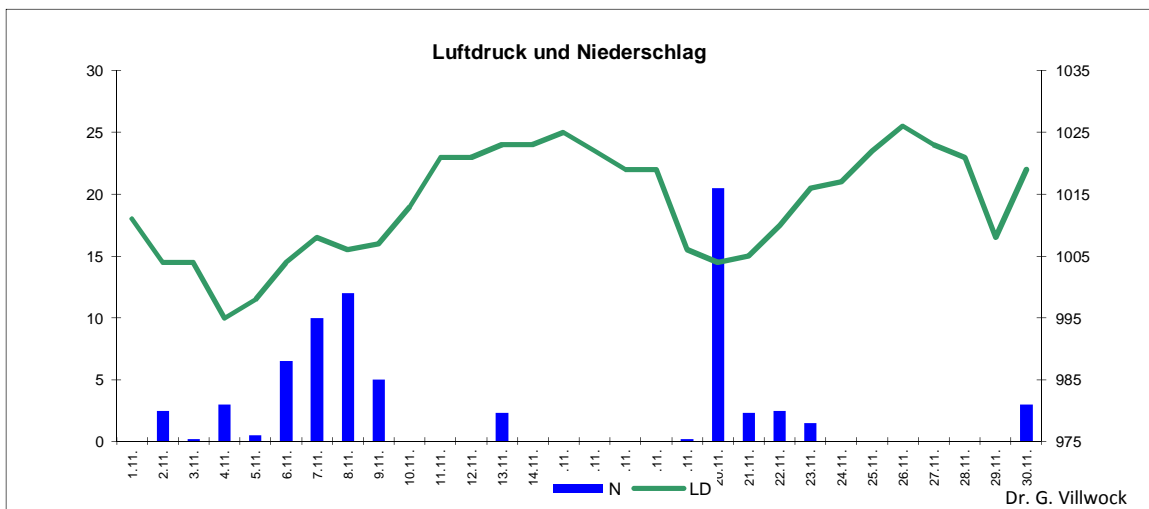
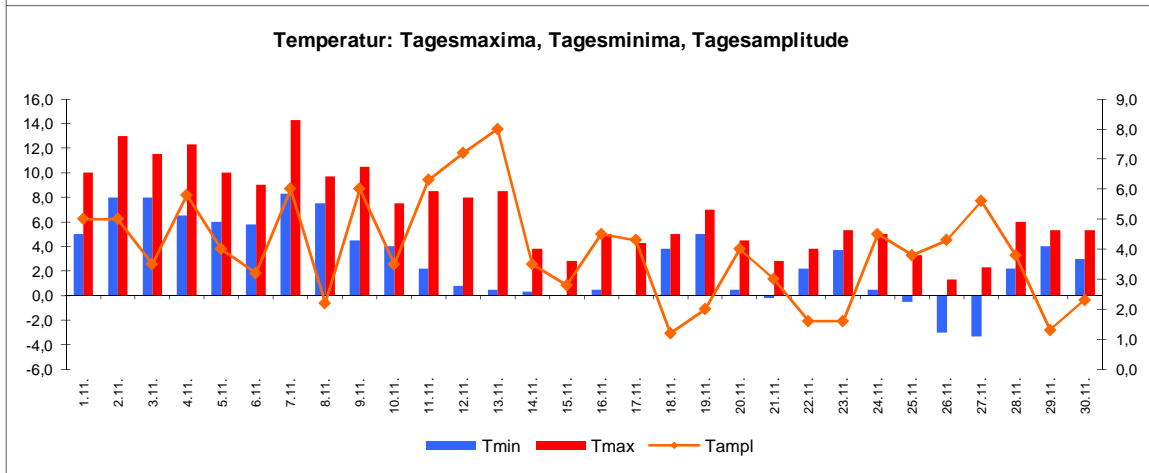
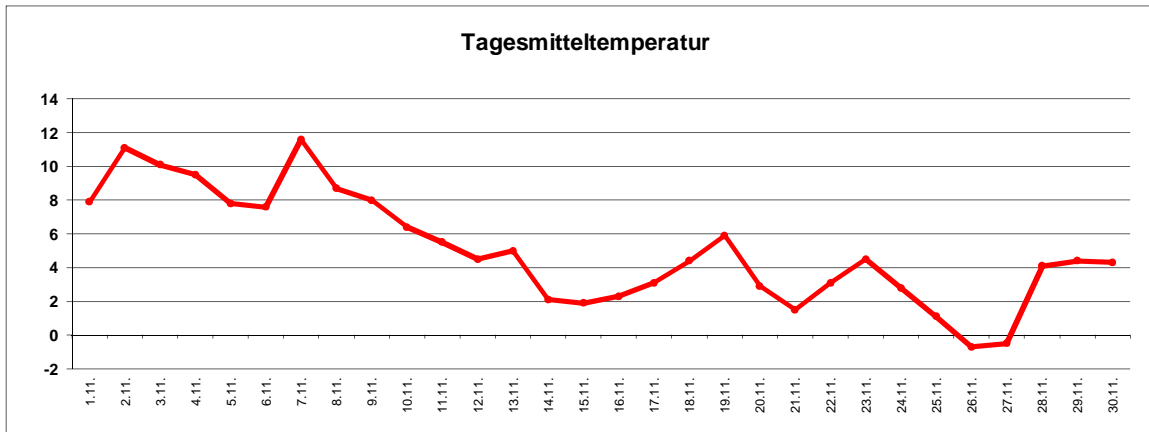


Wetter November 2013



Station Fienstedt 1
51°32' N 11°46' E Höhe: 138 m NN

	Temperatur	Temp. minim.	Temp. max.	Temp. Amplit.	Niederschlag	Luft-druck	Luft-feuchte	Bewölkung
Monatsmittel	5,0°C	2,9°C	6,9°C	4,0 grd	72,0 mm	1013 hPa	83 %	73 %
Reihe 1999/2012	4,9°C	2,6°C	7,2°C	4,6 grd	47,8 mm	1012 hPa	88%	69%
Frosttage (Tmin<0°):		4		Eistage (Tmax<0°):		0		
Sommertage (Tmax>25°C):		0		Heiße Tage (Tmax>30°C):		0		
Wärmster Tag:	11,6°C	7.11	Kältester Tag:	-0,7°C	26.11			
Höchste Temp.:	14,3°C	7.11	Niedrigste Temp.:	-3,3°C	27.11			



Dr. G. Villwock