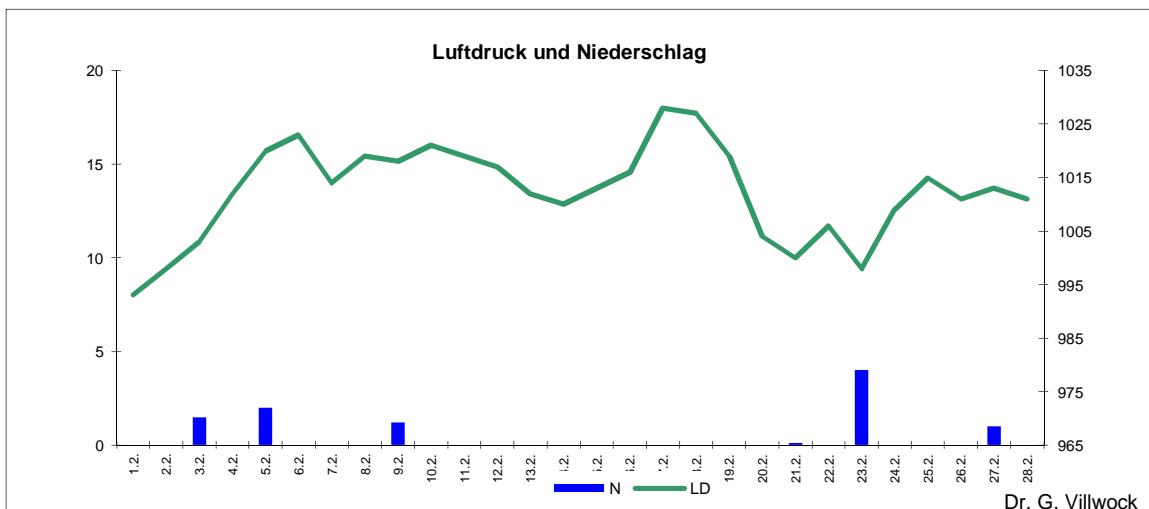
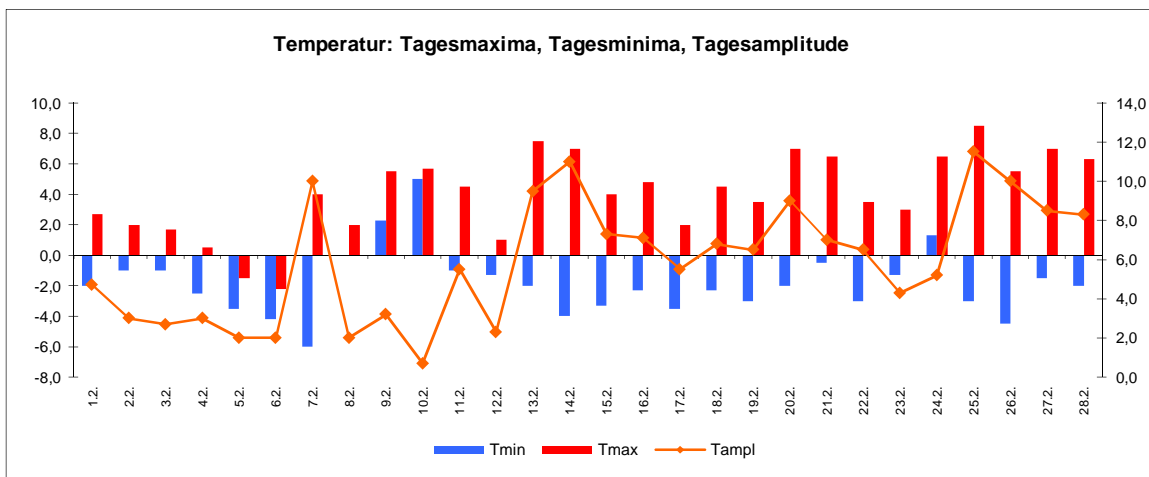
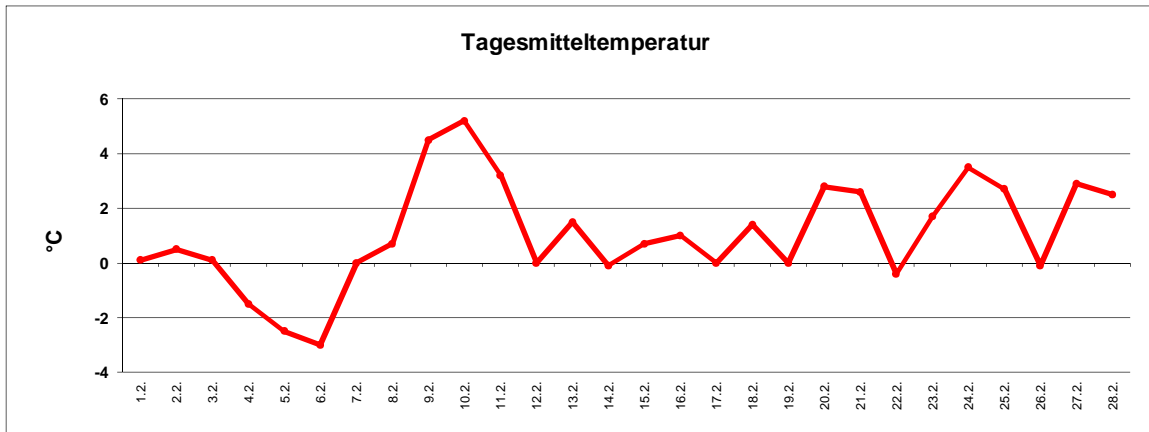


# Wetter Februar 2015



Station Fienstedt 1  
51°32' N 11°46' E Höhe: 138 m NN

	Temperatur	Temp. minim.	Temp. max.	Temp. Amplit.	Niederschlag	Luft-druck	Luft-feuchte	Bewölkung
Monatsmittel	1,1°C	-1,9°C	4,0°C	5,9 grd	9,8 mm	1012 hPa	77 %	53 %
Reihe 1999/2014	1,1°C	-1,3°C	3,6°C	5,0 grd	28,6 mm	1012 hPa	82%	66%
Frosttage (Tmin<0°):	22		Eistage (Tmax<0°):		2			
Sommertage (Tmax>25°C):	0		Kalte Tage (Tmax<-10°C):		0			
Wärmster Tag:	5,2°C	10.2.	Kältester Tag:		-3,0°C	6.2.		
Höchste Temp.:	8,5°C	25.2.	Niedrigste Temp.:		-6,0°C	7.2.		



Dr. G. Villwock