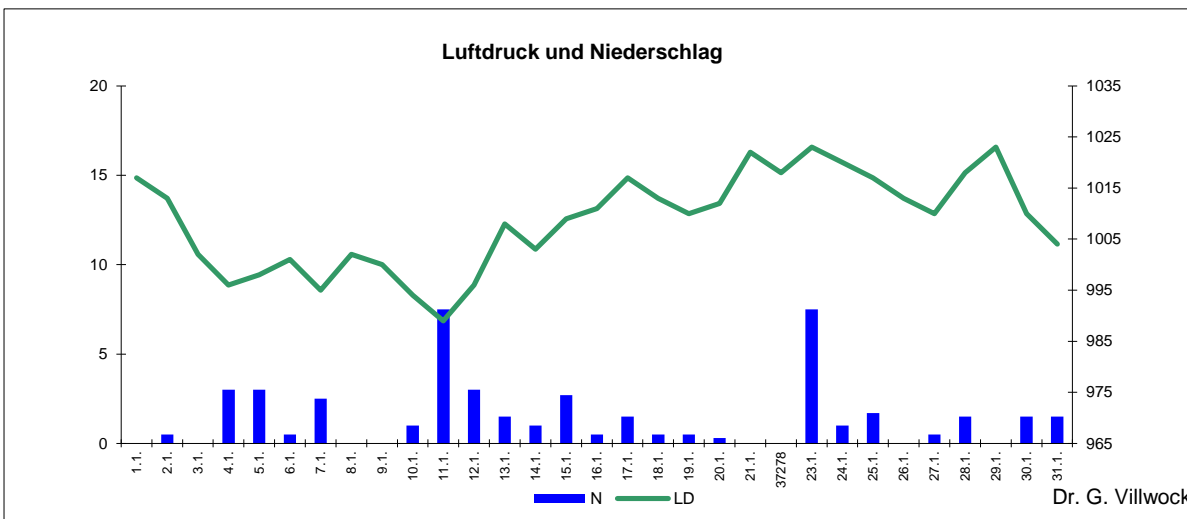
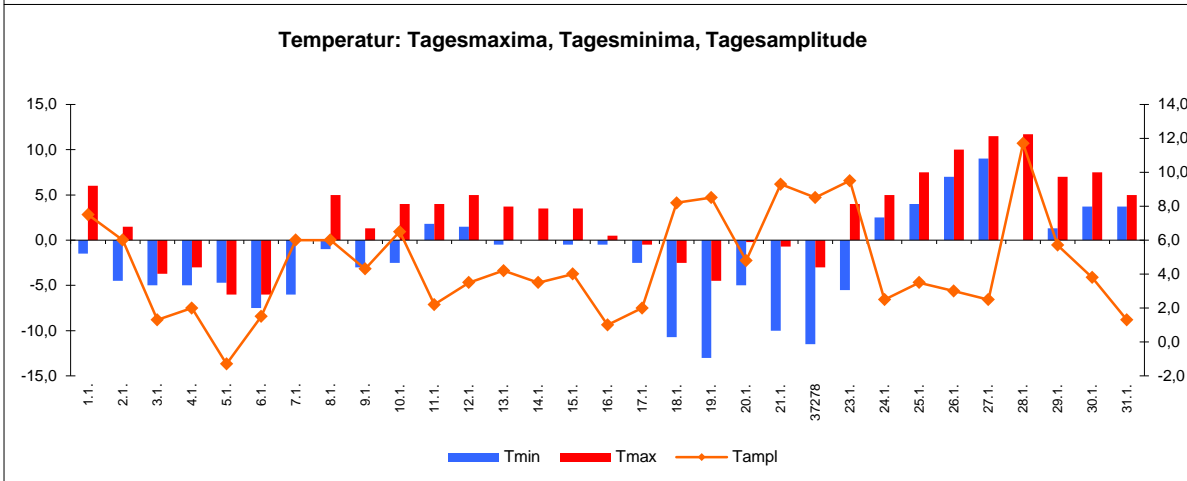
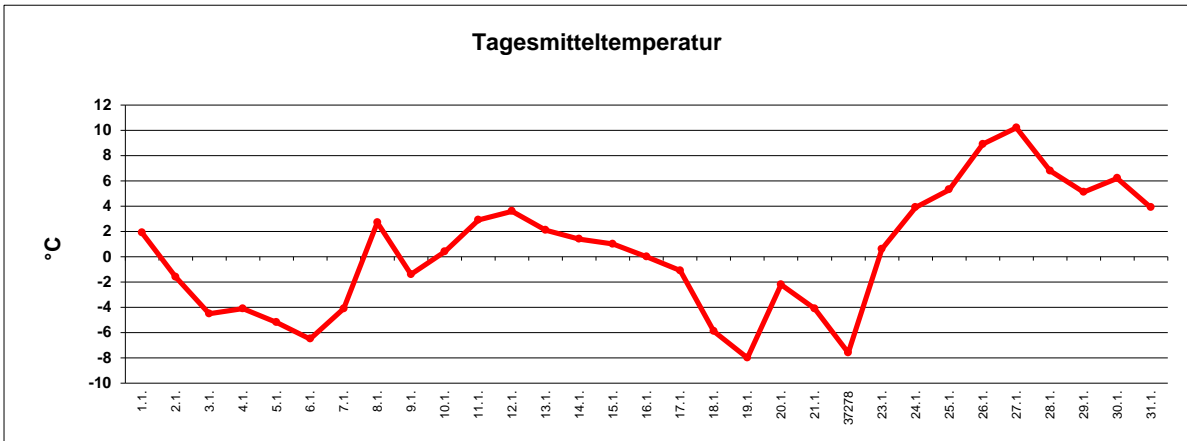


# Wetter Januar 2016



Station Fienstedt 1  
51°32' N 11°46' E Höhe: 138 m NN

	Temperatur	Temp. minim.	Temp. max.	Temp. Amplit.	Niederschlag	Luftdruck	Luftfeuchte	Bewölkung
Monatsmittel	0,3°C	-2,1°C	2,5°C	4,6 grd	44,7 mm	1009 hPa	87 %	68 %
Reihe 1999/2015	0,5°C	-1,7°C	2,5°C	4,1 grd	39,6 mm	1013 hPa	86%	70%
<b>Frosttage (Tmin&lt;0°):</b>	10		<b>Eistage (Tmax&lt;0°):</b>	10				
<b>Sommertage (Tmax&gt;25°C):</b>	0		<b>Heiße Tage (Tmax&gt;30°C)</b>	0				
<b>Wärmster Tag:</b>	10,2°C	27.1.	<b>Kältester Tag:</b>	-8,0°C	19.1.			
<b>Höchste Temp.:</b>	11,7°C	28.1,	<b>Niedrigste Temp.:</b>	-13,0°C	19.1.			



Dr. G. Villwock