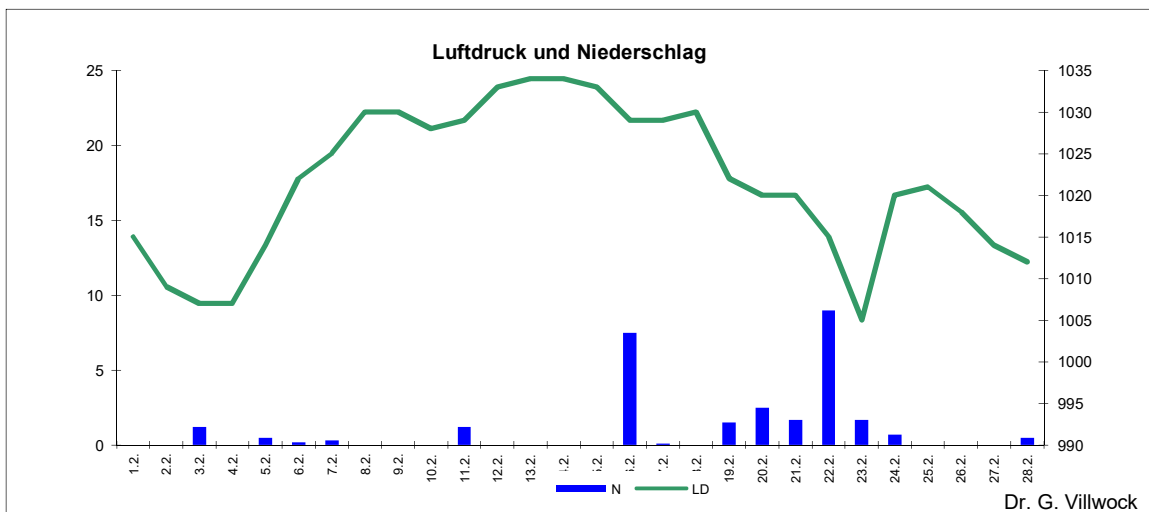
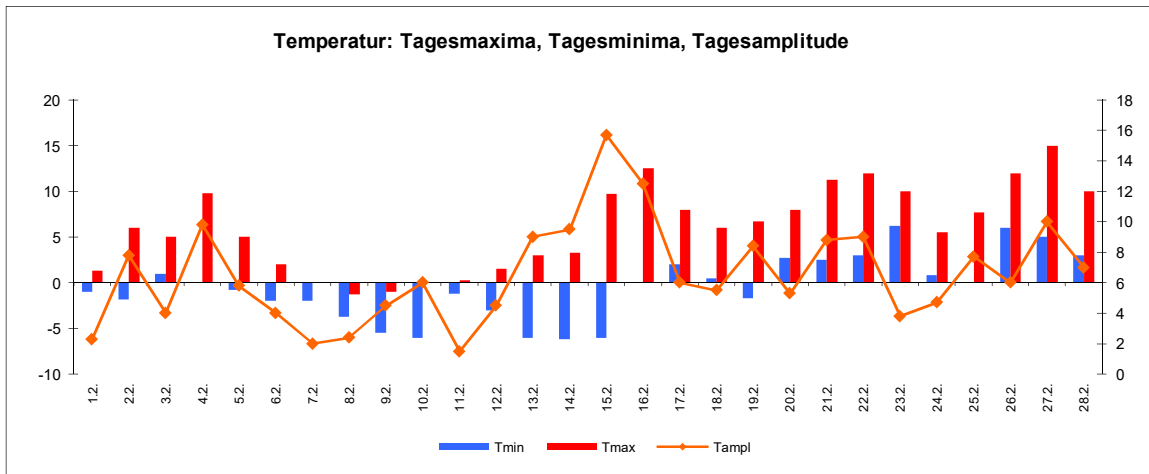
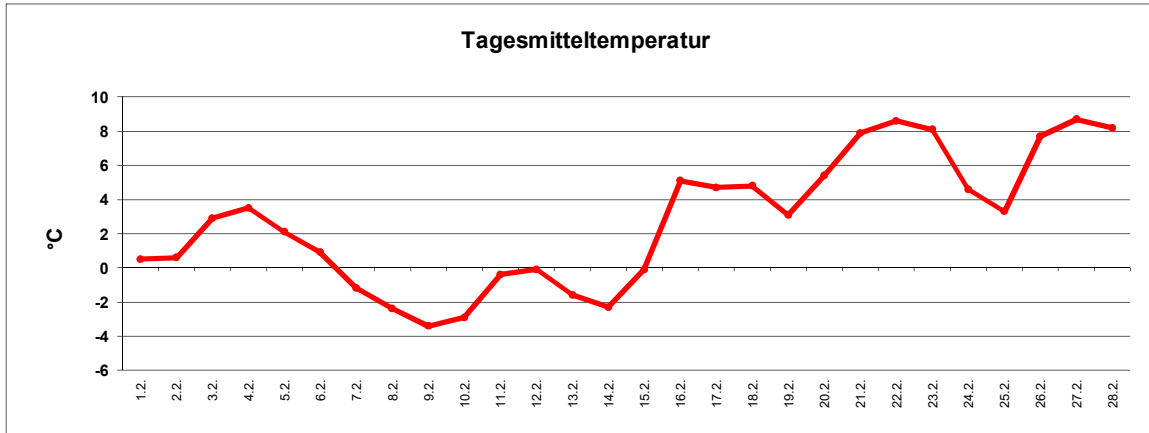


Wetter Februar 2017



Station Fienstedt 1
51°32' N 11°46' E Höhe: 138 m NN

	Temperatur	Temp. minim.	Temp. max.	Temp. Amplit.	Niederschlag	Luftdruck	Luftfeuchte	Bewölkung
Monatsmittel	2,8°C	-0,5°C	6,0°C	6,6 grad	28,6 mm	1022 hPa	79 %	76 %
Reihe 1999/2016	1,2°C	-1,2°C	3,8°C	5,1 grad	29,0 mm	1012 hPa	82%	65%
Frosttage (Tmin<0°):	12		Eistage (Tmax<0°):		2			
Sommertage (Tmax>25°C):	0		Kalte Tage (Tmax<-10°C):		0			
Wärmster Tag:	9,0°C	27.2.	Kältester Tag:		-3,5°C	9.2.		
Höchste Temp.:	15,0°C	27.2.	Niedrigste Temp.:		-6,2°C	14.2.		



Dr. G. Villwock