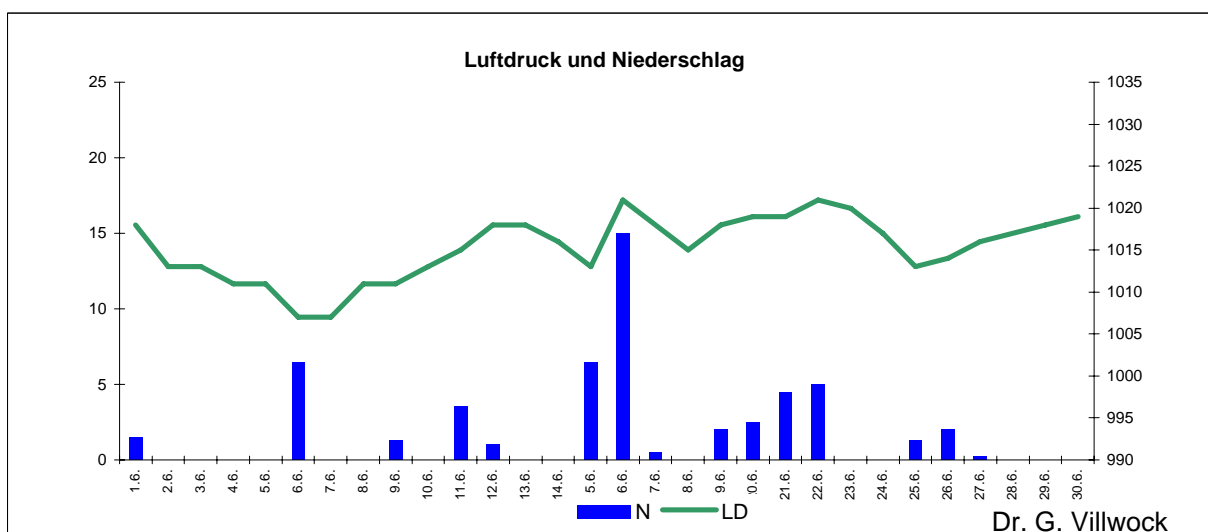
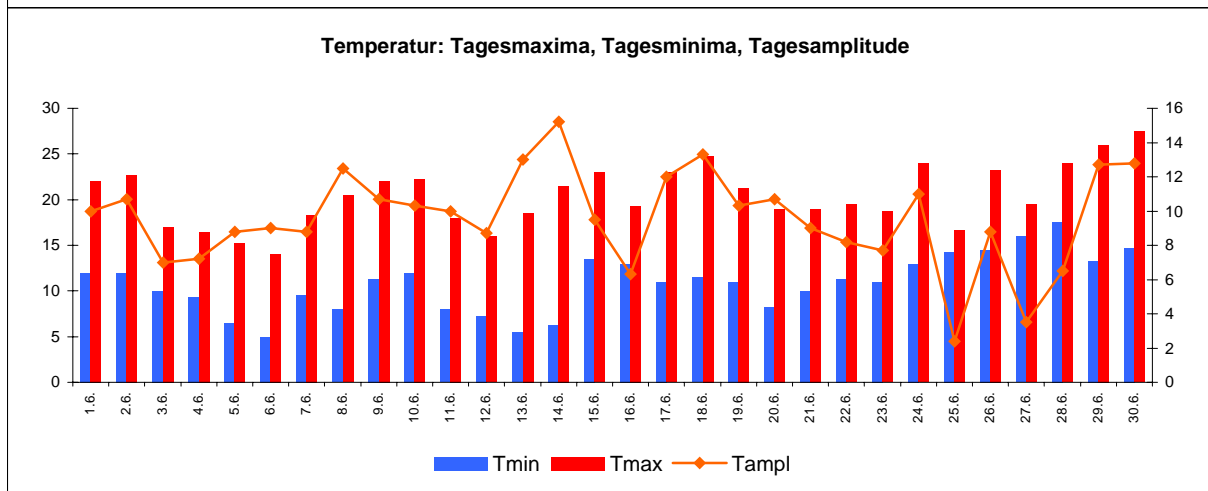
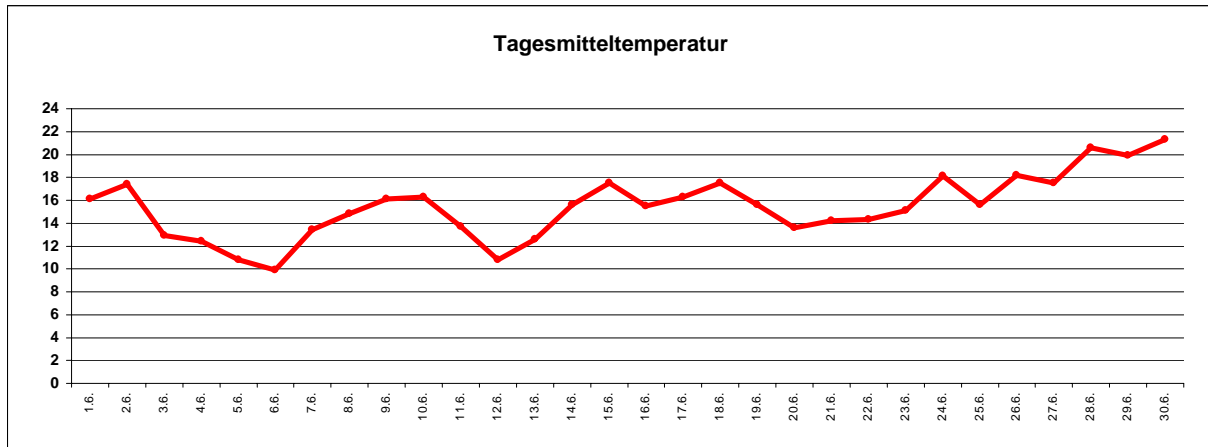


# WetterJuni 2009



Station Fienstedt 1  
51°32' N 11°46' E Höhe: 138 m NN

	Temperatur	Temp. minim.	Temp. max.	Temp. Amplit.	Niederschlag	Luft-druck	Luft-feuchte	Bewöl-kung
Monatsmittel	15,5°C	10,9°C	20,4°C	9,6 grd	53,3 mm	1015 hPa	73 %	65 %
Reihe 1999/2008	16,9°C	11,1°C	22,4°C	11,1 grd	52,9 mm	1014 hPa	69%	53%
Frosttage (Tmin<0°):	0		Eistage (Tmax<0°):	0				
Sommertage (Tmax>25°C):	2		Heiße Tage (Tmax>30°C):	0				
Wärmster Tag:	21,3°C	30.6.	Kältester Tag:	9,9°C	6.6.			
Höchste Temp.:	27,5°C	30.6.	Niedrigste Temp.:	5,0°C	6.6.			



Dr. G. Villwock