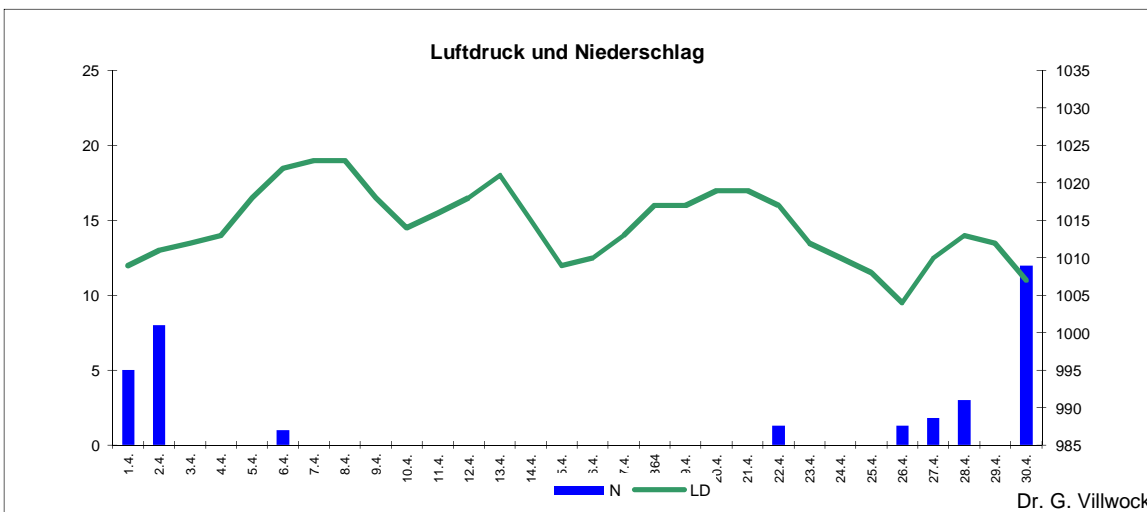
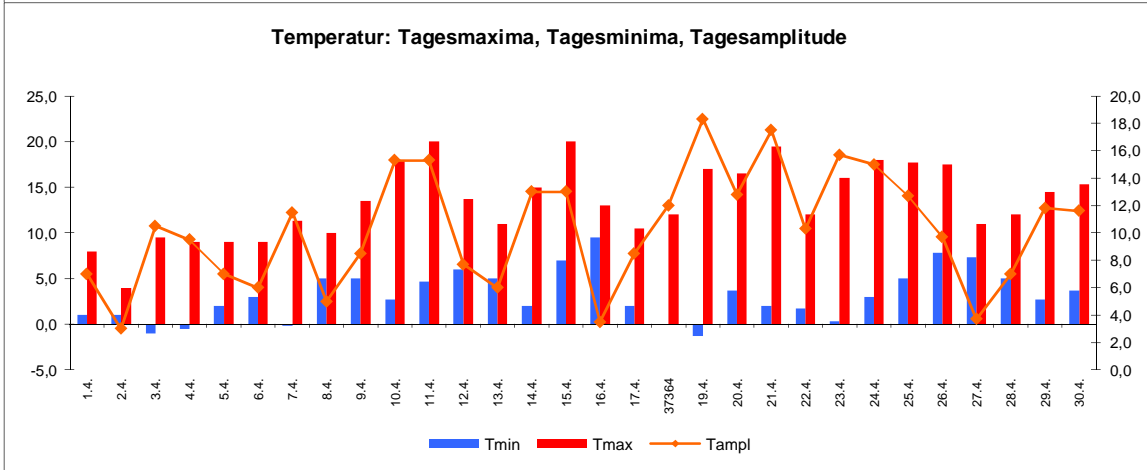
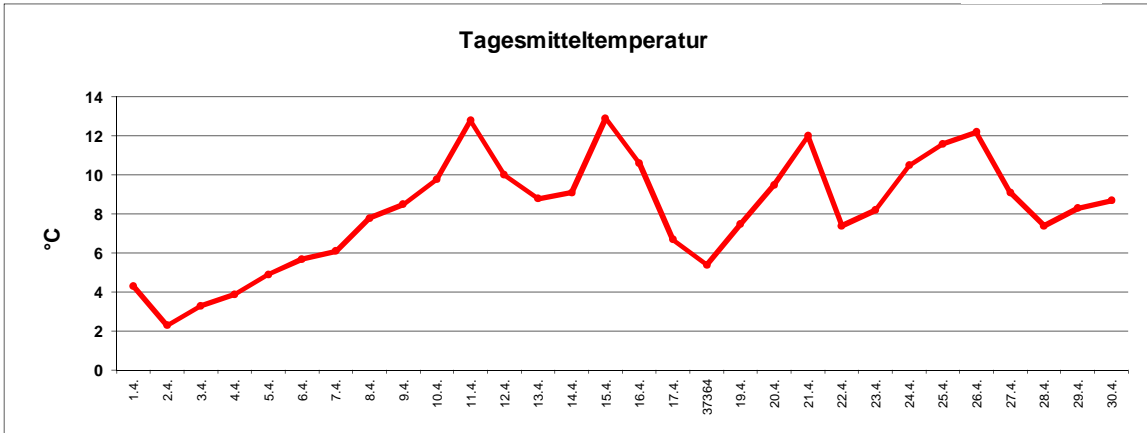


Wetter April 2015



Station Fienstedt 1
51°32' N 11°46' E Höhe: 138 m NN

	Temperatur	Temp. minim.	Temp. max.	Temp. Amplit.	Niederschlag	Luftdruck	Luftfeuchte	Bewölkung
Monatsmittel	8,2°C	3,2°C	13,5°C	10,3 grad	33,4 mm	1014 hPa	66 %	42 %
Reihe 1999/2014	9,2°C	4,6°C	14,0°C	9,4 grad	29,0 mm	1012 hPa	69%	54%
Frosttage (Tmin<0°):		4		Eistage (Tmax<0°):		0		
Sommertage (Tmax>25°C):		0		Heiße Tage (Tmax>30°C)		0		
Wärmster Tag:		12,9°C	15.4.	Kältester Tag:		2,3°C	2.4.	
Höchste Temp.:		20,0°C	15.4.	Niedrigste Temp.:		-1,3°C	19.4.	



Dr. G. Villwock