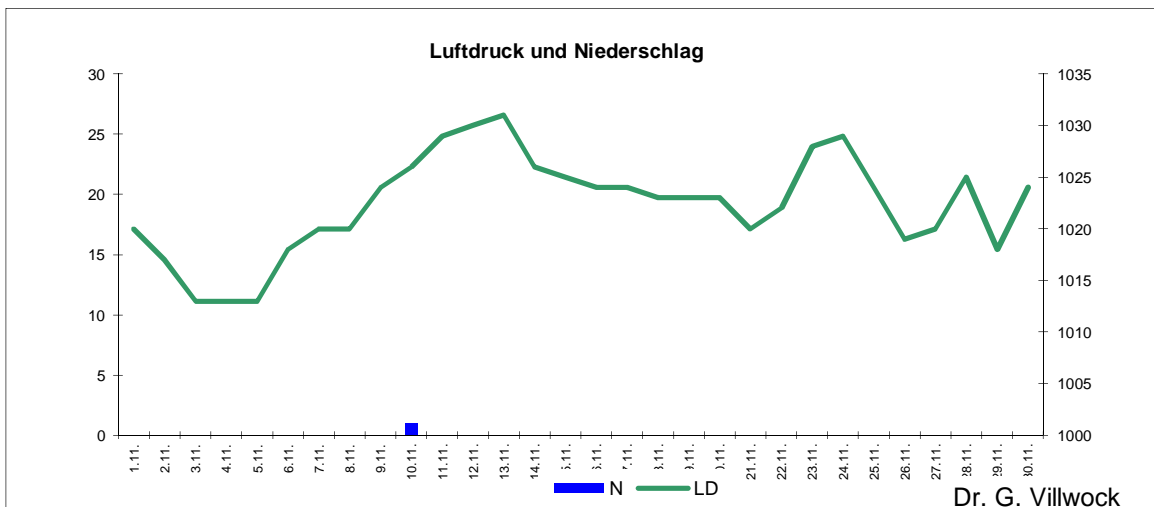
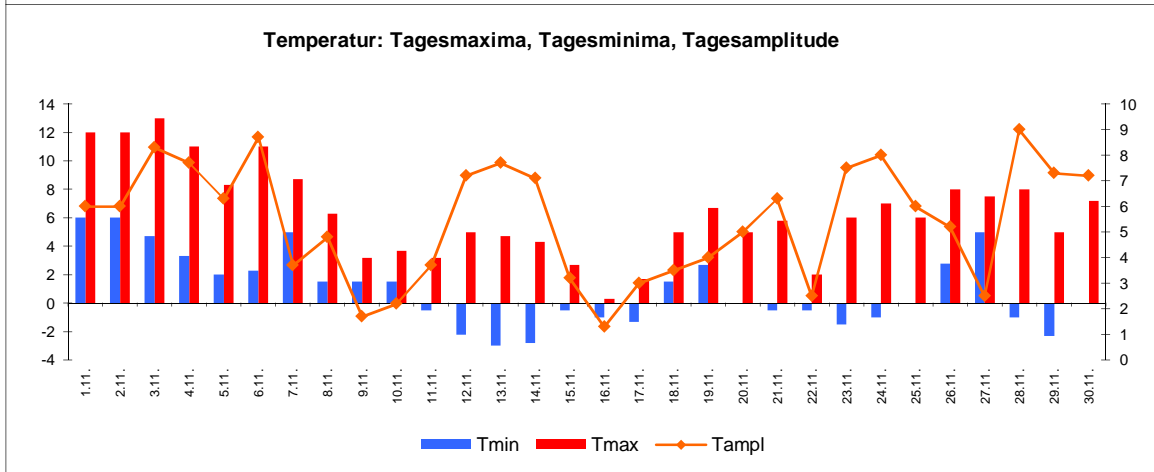
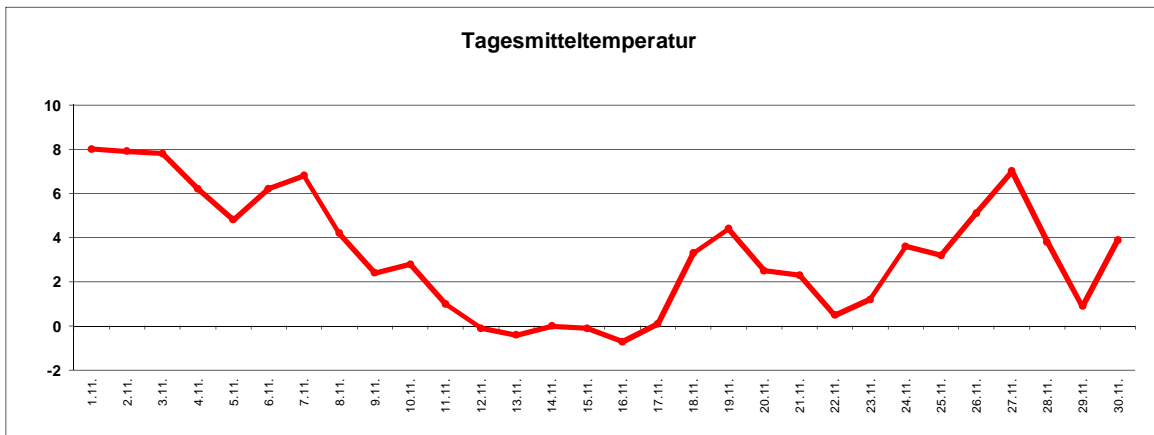


Wetter November 2011



Station Fienstedt 1
51°32' N 11°46' E Höhe: 138 m NN

	Temperatur	Temp. minim.	Temp. max.	Temp. Amplit.	Niederschlag	Luft-druck	Luft-feuchte	Bewölkung
Monatsmittel	3,3°C	0,9°C	6,3°C	5,4 grd	1,0 mm	1022 hPa	89 %	38 %
Reihe 1999/2009	5,0°C	2,7°C	7,3°C	4,6 grd	51,6 mm	1011 hPa	89%	71%
Frosttage (Tmin<0°):		13	Eistage (Tmax<0°):		0			
Sommertage (Tmax>25°C):		0	Heiße Tage (Tmax>30°C)		0			
Wärmster Tag:	8,0°C	1.11	Kältester Tag:	-0,7°C	16.11			
Höchste Temp.:	13,0°C	3.11	Niedrigste Temp.:	-3,0°C	13.11			



Dr. G. Villwock